

Womxn's Welcome Event

September 4, 2020



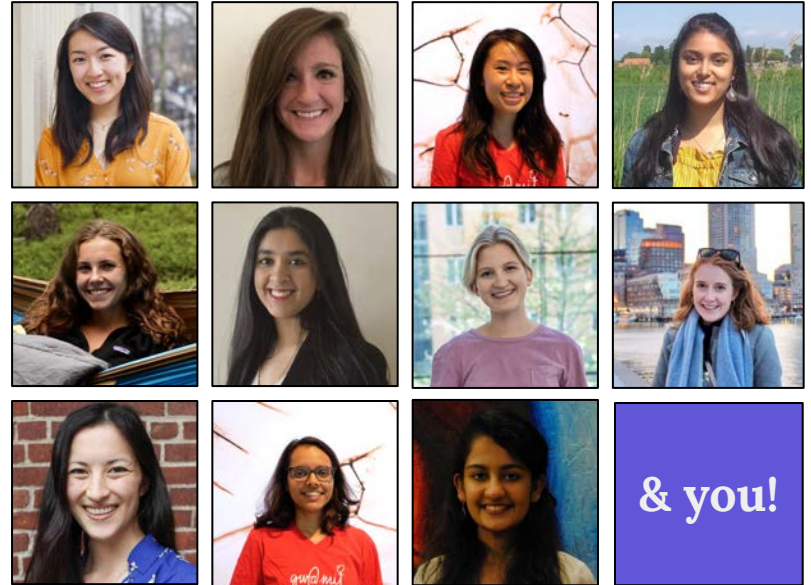
Graduate Womxn at MIT

We are...

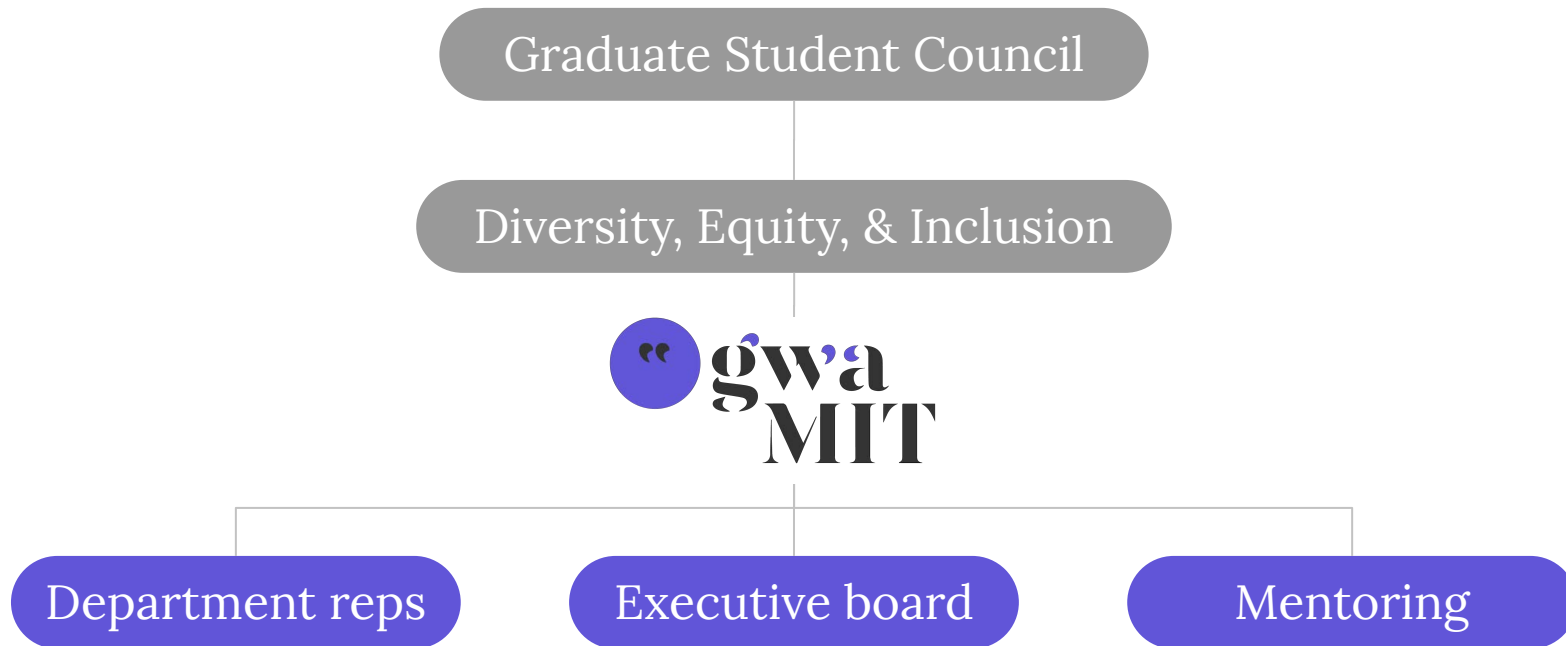
a student-led organization dedicated to supporting all womxn and members of minoritized gender groups within the MIT graduate community.

We work...

to enhance the professional development, individual growth, and empowerment of all graduate womxn at MIT.



Our structure



Flagship events

Orientation Womxn's Welcome Event (Summer)

- Welcome incoming womxn graduate students and share resources at MIT

Empowerment Conference (Fall)

- Promote discussion of issues relevant to life choices of graduate womxn

Leadership Conference (Spring)

- Strengthen communication and leadership skills



Resource Rush

LGBTQ+ Services

LGBTQ+ supports numerous student, employee and alumni groups as well as other departments and initiatives on campus aiming to foster equity, intersectionality and the continuum of social justice.

With a primary focus on students, our mission is to ensure a safe and supportive campus-wide community where students of diverse gender, romantic, and sexual identities are all welcomed as equals.



Contact Information:

lbgt@mit.edu

Websites:

lbgt.mit.edu | trans.mit.edu

OMP: Office of Multicultural Programs

OMP provides a myriad of educational and social opportunities designed to **support**, **advocate** for, and **celebrate** our diverse undergraduate and graduate student populations.

We help create a brave space for students to learn more about their own personal identity while valuing and respecting others.



Contact us:

omp@mit.edu

Website:

<https://studentlife.mit.edu/omp/>

MIT Spouses and Partners

MIT Spouses and Partners support the personal, social, and professional growth of all spouses and partners of MIT community members who relocate to the Boston area.

We provide consultations, programs, events, and other opportunities for our members to connect and support each other.

Some upcoming events:
Newcomer Zoom hour: bit.ly/mitnewcomers



Contact Information:

spousesandpartners@mit.edu

Website:

spouses.mit.edu/

IDHR: Institute Discrimination & Harassment Response Office

MIT is committed to providing a working, living, and learning environment free from discrimination and discriminatory harassment (including sexual misconduct) for all community members.

IDHR supports graduate womxn who have experienced harm to access supportive measures, resources, and resolution pathways to resolve the concern.

You can file an Incident Report at idhr.mit.edu anonymously or non-anonymously.



Contact Information:

idhr@mit.edu

Website:

idhr.mit.edu

WisDM: Women in Innovation and STEM Database at MIT

The Women in Innovation and STEM Database at MIT (WISDM) is an initiative designed to promote the visibility of women in our academic community and make it easier to find talented and diverse speakers for various events.



Contact Information:
innovation@mit.edu

Website:
innovation.mit.edu/wisdm/

MIT Women's League

The Women's League's mission is to personalize a large institution and humanize a technical institute by fostering friendly relations amongst MIT womxn, and providing an effective volunteer body and an arena for sharing mutual interests.

They offer a welcoming community of online social events, skillsharing, networking, workshops and talks.



MIT
Women's
League

Creating community at
MIT since 1913

Contact Information:

Kirsty Bennett, Manager:
kbennett@mit.edu

Website:
wl.mit.edu

Subscribe [here](#)

MIT Center for WorkLife and WellBeing

The MIT Center for WorkLife and WellBeing is committed to meeting the personal and professional needs of faculty, staff, postdocs, graduate students, and their families.

They offer a wide range of programs and services to enhance your quality of life, both at home and at work/school.

MIT/ GAIN: Graduate Assistance & Information Network - is a free and confidential 24/7 service for - relocation guidance, assistance with legal or financial matters, personalized child care resources



Contact Information:

[Call: 617-253-1592](tel:617-253-1592)

[Email: worklife@mit.com](mailto:worklife@mit.com)

MIT/GAIN:

[Call: 844-MIT-GAIN](tel:844-MIT-GAIN)

[Website: MITGAIN.com](http://MITGAIN.com)

[Email: info@mitgain.com](mailto:info@mitgain.com)

Website:

hr.mit.edu/worklife/center

AMITA: Association of MIT Alumnae

AMITA, the Association of MIT Alumnae, has been supporting MIT women students and graduates for 121 years.

AMITA celebrates the legacy and accomplishments of alumnae and supports women students and alumnae in attaining their fullest potential and achieving their desired impact on the world.



Contact Information:

daly@alum.mit.edu

Website:

<https://amita.alumgroup.mit.edu/>

The Margaret Cheney Room

The Margaret Cheney Room seeks to promote community and empower all students at MIT who experience gender-based systems of oppression. All cisgender, transgender women-identified and non-binary students are welcome.

The logo for The Margaret Cheney Room is displayed on a light blue rectangular background. The words "THE MARGARET" are written in a small, black, sans-serif font at the top. Below them, the words "cheney room" are written in a larger, bold, purple, sans-serif font.

THE MARGARET
cheney room

Contact Information:

cheneyroomstaff@gmail.com

Website:

<http://studentlife.mit.edu/women>

Ombuds Office

The Ombuds Office is a [confidential](#) and [independent](#) resource for everyone in the MIT community to constructively manage concerns and conflicts related to your experience at MIT.

We support your success in work and studies by helping you to analyze concerns, clarify policies and procedures, and identify options to constructively manage conflicts. We also provide systemic feedback to strengthen MIT and promote a fair and respectful culture.



Contact Information:

[Call: 617-253-5921](tel:617-253-5921)

[Email: kalina_s@mit.edu](mailto:kalina_s@mit.edu)

Ombudsperson contacts:

[Judi Segall: jsegall@mit.edu](mailto:jsegall@mit.edu)

[Nicholas Diehl: diehln@mit.edu](mailto:diehln@mit.edu)

Website:

ombudsoffice.mit.edu

Violence Prevention and Response (VPR)

Violence Prevention and Response (VPR) is MIT's **primary on-campus resource** for **preventing** and **responding** to interpersonal violence including sexual assault, dating and domestic violence, stalking, and sexual harassment. Our prevention specialists work with the entire campus to educate and raise awareness. All our services are free and confidential.



Contact Information:

[Hotline: 617-253-2300](tel:617-253-2300)

[Advocacy: vpradvocate@mit.edu](mailto:vpradvocate@mit.edu)

[Prevention and education:
vpreducation@mit.edu](mailto:vpreducation@mit.edu)

Website:

<https://studentlife.mit.edu/vpr>

Blanche Staton

Senior Associate Dean of Graduate Education
Director of the Office of Graduate Education



Introduction to Department Representatives

Keynote: Danielle Wood

Assistant Professor, Program in Media Arts & Sciences



Q&A

with Keynote Speaker Danielle Wood

Ways to get involved

- Become a Department Representative
 - Departments that still need representatives for 2020-2021:
 - Sloan, ChemE, Arch, PolSci, HASTS, Humanities, Writing, NSE, CCWCE, CMS, CSB, MAS, CRE, CCE, CTL, EECS
 - Recruiting for new representatives takes place each summer
- Join the Executive Board
 - Applications are advertised via the gwaMIT Newsletter at the end of each academic year
 - We are **currently recruiting** for an advocacy co-chair for 2020-2021!
- Join a conference planning committee
 - Committee positions are advertised via the biweekly gwaMIT Newsletter
- Join the new Diversity & Outreach Committee
 - Available positions will be advertised in an upcoming gwaMIT Newsletter
- Get a mentor through the gwaMIT mentorship program

Thank you!



Check your email for TechCash info!